



## *Graphic Design Portfolio*

*Denise Watson*





## ABOUT ME

- Darwin NT resident for over 50 years
- Dedicated to completing tasks to a high standard to fit with client time-frames
- Freelance Graphic Designer since February 2022
- Administration and Design Specialist for Government Organisation for 26 years





# DESIGN SKILLS

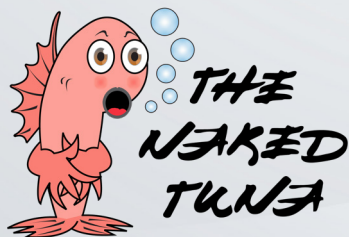
---

- Advertisements
- Annual Reports
- Banners
- Books
- Brochures
- Business Cards
- Certificates
- Charts
- Diagrams
- Fact Sheets
- Flowcharts
- Forms
- Infographics
- Invitations
- Logos
- Newsletters
- Organisation Charts
- Posters
- Presentations
- Promotional Items
- Reports
- Resumes
- Signs
- Social Media Graphics
- Strategic Plans
- Word Documents





# LOGOS

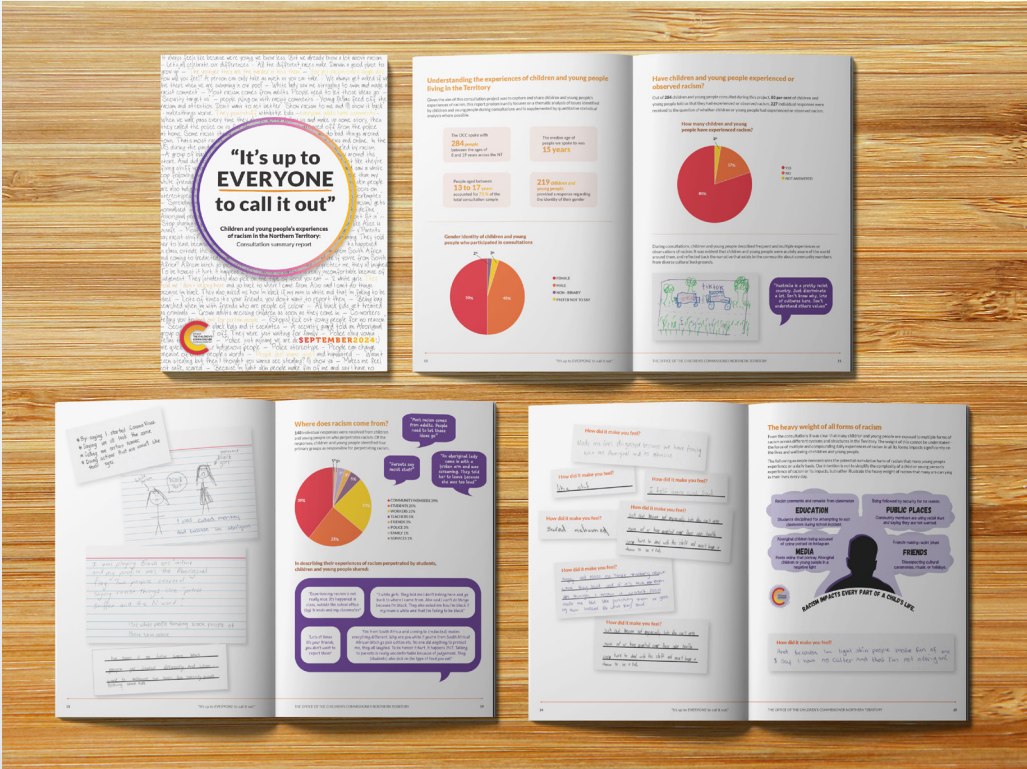




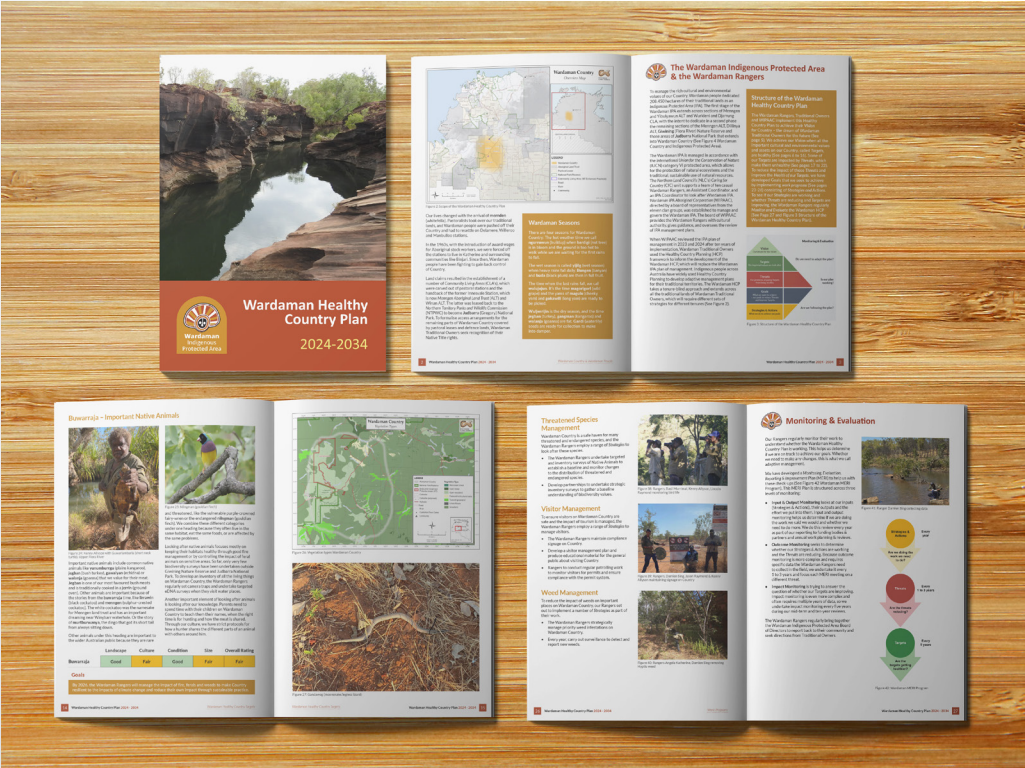
# BUSINESS CARDS



























# PROMOTIONAL MATERIAL









# PROMOTIONAL MATERIAL





# PROMOTIONAL MATERIAL





# PROMOTIONAL MATERIAL





# PROMOTIONAL MATERIAL



# PROMOTIONAL MATERIAL





# PROMOTIONAL MATERIAL



**HPA** **KOKODA INDUSTRIES**

**SERVICING RESIDENTIAL & CORPORATE CUSTOMERS**

**CONFIDENTIAL PAPER SHREDDING**

Let's work together to minimise waste and make the most of valuable resources.

**Let's work together to minimise waste and make the most of valuable resources.**

Plastic bins	Paper bins
General public - 240 to bin	General public - 240 to bin
General public - 1200 bin	General public - 1200 bin
Archives boxes handling fee	Archives boxes handling fee
Bin rental - 1 month	Bin rental - 1 month
Delivery fee to within 10 kms	Delivery fee to within 10 kms
Delivery fee 10km - 25km	Delivery fee 10km - 25km
Delivery fee 25km - 50km	Delivery fee 25km - 50km
Delivery fee > 50km	Delivery fee > 50km

**Contact HPA to arrange delivery of confidential bins for regular collections.**

**8932 5184**

HPA has been providing opportunities for Territorians living with a disability since 1983

**HelpingPeopleAchieve.com.au**

**HPA** **KOKODA INDUSTRIES**

**Sprinkler Stands**

Small - 600mm | Medium - 1000mm | Large - 1500mm

- Durable
- Long lasting
- High flow
- Large area coverage
- Can water over bushes, shrubs & other foliage
- Domestic or commercial use

HPA provides supported employment to Territorians with disabilities

Add fittings from your Irrigation hardware store

Impact Sprinkler Head | 3/4" x 1/2" Poly Irrigation | 1/2" Universal Top Adapter

**(08) 8947 0681** | [inspire@hpa.net.au](mailto:inspire@hpa.net.au) | [HelpingPeopleAchieve.com.au](http://HelpingPeopleAchieve.com.au)

**DAS** **Support Services**

**Exciting Opportunity at HPA's Supported Independent Living (SIL) Accommodation!**

Looking for a supportive and enriching living environment that caters to your needs?

Explore the exceptional Supported Independent Living accommodation available at HPA!

Our SIL accommodation is thoughtfully designed to offer a safe, comfortable, and empowering space for individuals seeking independence with the necessary support.

Here's what sets us apart:

- Tailored Support:** Our dedicated team is committed to providing personalised support to help you thrive in your daily living activities.
- Community Connection:** Join a vibrant community of like-minded individuals and build meaningful relationships in a welcoming environment.
- Quality Living Spaces:** Enjoy well-appointed and accessible living spaces that cater to your specific requirements for comfort and convenience.
- Empowerment and Independence:** Experience a nurturing environment that promotes your independence while ensuring you have the assistance you need.

Experience a new level of independence and support at HPA's SIL accommodation! Take the next step towards a fulfilling living experience by choosing our inclusive and empowering community.

To learn more about HPA's Supported Independent Living Accommodation  
Contact Jacki: [0419 816 368](tel:0419816368) | [Jacki.Hunter@hpa.net.au](mailto:Jacki.Hunter@hpa.net.au)

**HelpingPeopleAchieve.com.au** 13

**HPA** **Helping People Achieve**

**Recycling your Cans & Bottles**

**Thanks for your support**

**REUSE**  
**REDUCE**  
**RECYCLE**

**KOKODA INDUSTRIES**

**You Asked, Kokoda Delivered**

Introducing HPA Industries NEW made to measure planter boxes starting from only \$395, ex GST.

- Stylish and durable for the Darwin weather.
- 100% NT made using NT supplied material.
- Built locally by Supported Territorians.

**Kokoda Pallets**

Another happy client for HPA. Thank you to ERA mining for keeping it local and using us for your hardwood pallet order.

**HPA** **KOKODA INDUSTRIES**

**Sprinkler Stands**

Small - 600mm | Medium - 1000mm | Large - 1500mm

- Durable
- Long lasting
- High flow
- Large area coverage
- Water over bushes, shrubs & other foliage
- Domestic or commercial use

HPA provides supported employment to Territorians with disabilities

**(08) 8947 0681** | [inspire@hpa.net.au](mailto:inspire@hpa.net.au) | [HelpingPeopleAchieve.com.au](http://HelpingPeopleAchieve.com.au)

**HPA** **Helping People Achieve** **KOKODA INDUSTRIES**

**Timber Planter Boxes**

**Made by HPA**

**Made to order in 3 sizes**

- Small - 550 x 550 x 430mm \$ 928
- Medium - 1200 x 430 x 540mm \$1238
- Large - 1410 x 650 x 550mm \$1525

Designed to hold potted plants, use inside, or on a covered patio, deck or balcony.

**8947 0681** | [workshop@hpa.net.au](mailto:workshop@hpa.net.au) | [HelpingPeopleAchieve.com.au](http://HelpingPeopleAchieve.com.au)

**HPA** **Helping People Achieve**

**GET THE LATEST HPA NEWS**

**JOIN OUR EMAILING LIST**

STAY UP-TO DATE ON OUR LATEST NEWS  
EMAILED STRAIGHT TO YOUR INBOX  
FILL OUT THIS FORM  
FIND THE LINK ON OUR WEBSITE

[www.helpingpeopleachieve.com.au](http://www.helpingpeopleachieve.com.au)



# PROMOTIONAL MATERIAL



**Ausdesigns™**  
Supported Employment

Explore your Career Pathways!

Ausdesigns™ is a division of HPA, Helping People Achieve, a not-for-profit Australian Disability Enterprise situated in Palmerston NT. We offer a wide range of meaningful employment opportunities for those living with a disability.

**ndis**

With so many different employment options available, the skills you can learn are endless.

**Confidential Paper Sorting**  
Full training given to separate plastic, cardboard and metal components in preparation to commence confidential shredding.

**Industrial Shredding**  
Supported to learn and understand good WHS standards. Training to acquire a variety of skills including operating the industrial shredder, safety and rescue in preparation of finalising the paper bale ready for transportation.

**Rag Preparation**  
Removing tags, buttons and logos from recycled materials and cutting into required size. Working in a team environment. Weighing of industrial rag bags and sealing completed product ready for sale to customer.

**Sewing and Textiles**  
Extensive training offered to operate industrial sewing machines. Assisting in trimming and turning of genuine Aboriginal designed fabric products that are produced to the highest quality.

**Screen Printing and Digital Design**  
Obtaining skills to highlight abilities, assist in graphic design and all aspects of both digital and screen printing. Support and guidance given to ensure a high quality of product is delivered as per customer order.

**Administration**  
Building confidence whilst developing administration and reception skills in a supportive environment.

HelpingPeopleAchieve.com.au

**Shoal Bay Trash & Treasure**  
Supported Employment

Explore your Career Pathways!

HPA in partnership with City of Darwin operate the Trash and Treasure store, reducing the amount of material entering the landfill at Shoal Bay with recycled materials being separated from general waste. It is also a convenient way for the community to reuse and recycle unwanted items.

**ndis**

Shoal Bay Trash and Treasure provide a number of career pathways and skills including rebuilding and retail operation.

**Load and Unload Donations**  
• Appropriate manual handling techniques  
• Wearing appropriate PPE and understanding workplace OHS  
• Working as part of a team

**Organising the Warehouse**  
• Sorting of items  
• Displaying goods in categories  
• Housekeeping  
• Refurbishment of furniture/furniture assembly

**Yard Duties**  
• Organising goods to fit categories of bins  
• Assist customers with finding various products  
• Assist customer in loading and tie down procedures  
• Make sure the area is clean of all debris to create a safe area

**Repurposing Projects**  
• Bike maintenance  
• Lawnmower fix jobs  
• Gardening  
• Lawn mower maintenance

HelpingPeopleAchieve.com.au

**Breaking Ground**

**LAWN MOWING, GARDEN & GROUNDS MAINTENANCE**

Let our Breaking Ground crew maintain your garden. Your lawn, your landscape - our passion!

We provide lawn, plant & bush maintenance, irrigation assessment & installation, mulching, fertilising & general management & litter removal.

HPA provides inclusive employment for people with disability whilst providing domestic and commercial grounds maintenance for Greater Darwin and Palmerston.

HelpingPeopleAchieve.com.au

**HPA COLLECTED AND WILL NOW RECYCLE YOUR HARD RUBBISH!**

We appreciate your donation as it will support appropriate employment for people with disability.

Come to Trash and Treasure at Shoal Bay to see how your rubbish makes a difference and how together we can reduce landfill.

HelpingPeopleAchieve.com.au

**Breaking Ground**  
Supported Employment

Explore your Career Pathways!

Breaking Ground is a high-quality, commercial grounds maintenance service for Greater Darwin and Palmerston. We provide lawn maintenance, plant management, litter control, fertilising and weed management, as well as horticultural expertise to our clients.

**ndis**

Supported employees will be trained to understand the importance of workplace OHS and develop basic skills in ground maintenance working at commercial and residential properties and schools.

Employees will learn to:

- Work co-operatively with colleagues during maintenance activities
- Select and use appropriate equipment safely and according to manufacturer's instructions
- Wear correct/required clothing according to type of work being completed and prevailing conditions
- Clean work areas following completion of work.

**Lawn Maintenance**  
Training will be provided to maintain lawns in the condition specified by the supervisor.

**Gardening Work**  
Training will be carried out to complete routine gardening activities following the direction of a supervisor.

**Hedge Cutting**  
Training will be provided to build skills to trim hedging, shrubs and small trees, remove dead, damaged or unwanted trees.

**General Maintenance**  
Training will be provided in general repairs and maintenance of properties, this type of work ranges from fixing door handles to fitting permanent structures to walls as directed by supervisor.

HelpingPeopleAchieve.com.au

**Looking for Work?**

Are you a person with disability looking for work?

Do you have an NDIS Plan?

Do you receive or are eligible for a Disability Support Pension?

Would you like to come & try a day at one of our sites?

If you answered yes to these questions then give us a call.

For more information contact Sandra Johnstone  
0832 584 (ext 202) | [sam@hpa.net.au](mailto:sam@hpa.net.au) | [helpingpeopleachieve.com.au](http://helpingpeopleachieve.com.au)

**Looking for Work?**

Are you a person with disability looking for work?

Do you have an NDIS Plan?

Do you get a Disability Support Pension?

Would you like to come & try a day at one of our sites?

For more information contact Sandra Johnstone  
0832 584 (ext 202) | [sam@hpa.net.au](mailto:sam@hpa.net.au) | [helpingpeopleachieve.com.au](http://helpingpeopleachieve.com.au)

**Breaking Ground**

**HOME MAINTENANCE AND HANDYMAN SERVICES**

Let our Breaking Ground crew do those little jobs that need doing.

- Hanging pictures or mirrors
- Hanging blinds & curtains
- Light fixtures
- Furniture assembly
- Painting
- Fences & gate repair
- Fence detection or repairs
- Stairs & rocks
- Much more

The quality you expect, the service you deserve!

HPA provides inclusive employment for people with disability whilst providing home maintenance and handyman services in Darwin and Palmerston.

HelpingPeopleAchieve.com.au

**LEAP!** Learning, Employment, Achievement through Planning

Are you a person living with disability who would like to find out more about getting a job, keeping it and loving work?

HPA offers a series of free LEAP! workshops and it is a chance to improve your skills and knowledge of the workplace. Workshops may involve work skills, personalisation and discussions on a range of topics.

LEAP! is a HPA initiative funded through a Future 2 grant. It is a co-ordinator program involving people with disability in the design and implementation.

For more information or to register your interest in attend LEAP! workshops, email: [leap@hpa.net.au](mailto:leap@hpa.net.au) or Sandra Johnstone, [sjohnstone@hpa.net.au](mailto:sjohnstone@hpa.net.au)

HelpingPeopleAchieve.com.au

**Kokoda Industries**  
Supported Employment

Explore your Career Pathways!

Kokoda Industries is a small manufacturer of quality timber and metal products. We use high-quality materials to manufacture our products for homes, workplaces, parks and public facilities.

**ndis**

Kokoda Industries provides career pathways and basic skills in the manufacturing process from design to construction.

**Metal Fabrication**

- Understand the importance of workplace OHS
- Identify and read cutlist associated with metal fabrication
- Set up machinery and cut material as required for job orders

**Woodwork & Carpentry**

- Understand the importance of workplace OHS
- Identify and read cutlist associated with woodwork and carpentry
- Set up machinery and cut material as required for job orders

HelpingPeopleAchieve.com.au

**Looking for Work?**

Are you a person with disability looking for work?

Do you have an NDIS Plan?

Do you get a Disability Support Pension?

Would you like to come & try a day at one of our sites?

For more information contact Sandra Johnstone  
0832 584 (ext 202) | [sam@hpa.net.au](mailto:sam@hpa.net.au) | [helpingpeopleachieve.com.au](http://helpingpeopleachieve.com.au)

**Looking for Work?**

Are you a person with disability looking for work?

HPA offers supported employment through our Business Enterprises. You'll have the opportunity to gain new skills, be part of a team and earn an income, working in a commercial environment with support and mentoring from Employment Coaches and Production Team Leaders.

Want to learn some new skills?

- Confidential paper sorting | Industrial shredding | Rag preparation
- Sewing & button | Screen printing & digital design | Laser maintenance
- Manufacture quality timber & metal products | Understand the importance of workplace OHS | Identify and read cutlist | Set up machinery and cut material as required for job orders
- Lawn maintenance | Gardening work | Hedge cutting | General maintenance | Operate equipment safely | Understand the importance of workplace OHS
- Retail operations | Load & unload donations | Organise the warehouse | Yard duties | Repurposing projects

Supported Employment is funded through the NDIS to help you assist and assist in the workplace. You will have the opportunity to gain new skills, be part of a team and earn an income, working in a commercial environment with support and mentoring from Employment Coaches and Production Team Leaders.

Come and try for a day at one of our sites!

For more information contact Sandra Johnstone  
0832 584 (ext 202) | [sam@hpa.net.au](mailto:sam@hpa.net.au) | [helpingpeopleachieve.com.au](http://helpingpeopleachieve.com.au)

**Breaking Ground**

**LAWN MOWING, GARDEN & GROUNDS MAINTENANCE**

Let our Breaking Ground crew maintain your garden. Your lawn, your landscape - our passion!

- Lawn mowing
- Pruning
- Mulching
- Irrigation assessment
- Fertilising
- Weed control
- Fencing & installation
- Litter clearing

HPA provides inclusive employment for people with disability whilst providing domestic and commercial grounds maintenance for Darwin and Palmerston.

HelpingPeopleAchieve.com.au

**HPA OPEN DAY**

**CELEBRATING** People with Disability

30<sup>th</sup> November 2023  
10:00 am - 2:00 pm

Ausdesigns  
46 Tooplin Road  
Yarrwong NT 0830  
Light refreshments provided

HelpingPeopleAchieve.com.au



# SOCIAL MEDIA GRAPHICS





# SOCIAL MEDIA GRAPHICS





# SOCIAL MEDIA GRAPHICS





# SOCIAL MEDIA GRAPHICS



*A meaningful logo is a symbol of what you stand for and what you aspire to do or be.*

*Simple logo's are Instantly recognisable, crystal clear, versatile and more memorable.*

**Do you need help formatting that Word doc?**

Font Size? Styles? Themes? Links? Lists? Pictures? Charts? Headers? Footers? Breaks? Colours? Tables? Content Table? Footnotes? Bullet Points? Headings? Page Numbers? Text Wrap? Cover Page? Spacing? Columns?

denise-designs.au | denisedesigns@bigpond.com | 0416 384 820

**Pick Me!**

**denise-designs.au**

**Christmas Message Design**

- Cards/E-cards
- Invitations
- Posters
- Advertisements
- Signs
- Closure Notices
- Social Media Graphics
- Labels

**Denise Designs**

denise-designs.au | denisedesigns@bigpond.com | 0416 384 820

**Personalised Party Invitation Design**

denise-designs.au | denisedesigns@bigpond.com | 0416 384 820



# PRESENTATIONS



**PowerPoint Presentation**  
DESIGN  
Published and Professional

**Mission statement**  
We envision organizations to foster collaborative thinking and innovation. We believe that a company should not be a community and not be able to communicate quickly and efficiently.

**Management team**  
Taylor Phillips, Head of Design  
Katie Anderson, Head of Design  
Katie Anderson, Head of Design  
Katie Anderson, Head of Design

**The team**  
Taylor Phillips, Head of Design  
Katie Anderson, Head of Design  
Katie Anderson, Head of Design  
Katie Anderson, Head of Design

**Market summary**  
Market size  
Market growth  
Market share  
Market competition

**Opportunities**  
Market size  
Market growth  
Market share  
Market competition

**Business overview**  
Business overview  
Business overview  
Business overview  
Business overview

**Business concept**  
Business concept  
Business concept  
Business concept  
Business concept

**Goals and objectives**  
Goals and objectives  
Goals and objectives  
Goals and objectives  
Goals and objectives

**Financials**  
Financials  
Financials  
Financials  
Financials

**Financials table**  
Financials table  
Financials table  
Financials table  
Financials table

**Risks and rewards**  
Risks and rewards  
Risks and rewards  
Risks and rewards  
Risks and rewards

**Key issues**  
Key issues  
Key issues  
Key issues  
Key issues

**Thank you**  
Thank you  
Thank you  
Thank you  
Thank you

**PowerPoint Presentation**  
DESIGN  
Published and Professional

**Mission Statement**  
We envision organizations to foster collaborative thinking to drive workplace innovation. We believe that a company should not be a community and not be able to communicate quickly and efficiently.

**Organisation Chart**  
Organisation Chart  
Organisation Chart  
Organisation Chart  
Organisation Chart

**Market Summary**  
Market Summary  
Market Summary  
Market Summary  
Market Summary

**Infographic**  
Infographic  
Infographic  
Infographic  
Infographic

**Infographic**  
Infographic  
Infographic  
Infographic  
Infographic

**POWERPOINT PRESENTATION**  
DESIGN  
BRIGHT AND FUNNY

**Stand Out**  
Topic one  
Topic two  
Topic three  
Topic four  
Topic five

**Introduction**  
Lorem ipsum dolor sit amet, consectetur adipiscing elit, sed do eiusmod tempor incididunt ut labore et dolore magna aliqua. Lorem ipsum dolor sit amet, consectetur adipiscing elit.

**Topic one**  
Subtitle  
Topic one  
Topic one  
Topic one  
Topic one

**Chart**  
Chart title  
Chart title  
Chart title  
Chart title

**Table**  
Table title  
Table title  
Table title  
Table title

**Team**  
Team  
Team  
Team  
Team

**Timeline**  
Timeline  
Timeline  
Timeline  
Timeline

**Content**  
Content  
Content  
Content  
Content

**Content**  
Content  
Content  
Content  
Content

**Summary**  
Summary  
Summary  
Summary  
Summary

**Thank you**  
Thank you  
Thank you  
Thank you  
Thank you

**PowerPoint Presentation**  
DESIGN  
Published and Professional

**Mission statement**  
We envision organizations to foster collaborative thinking to drive workplace innovation. We believe that a company should not be a community and not be able to communicate quickly and efficiently.

**Management team**  
Taylor Phillips, Head of Design  
Katie Anderson, Head of Design  
Katie Anderson, Head of Design  
Katie Anderson, Head of Design

**The team**  
Taylor Phillips, Head of Design  
Katie Anderson, Head of Design  
Katie Anderson, Head of Design  
Katie Anderson, Head of Design

**Market summary**  
Market summary  
Market summary  
Market summary  
Market summary

**Opportunities**  
Opportunities  
Opportunities  
Opportunities  
Opportunities

**Meet Our CEO**  
Meet Our CEO  
Meet Our CEO  
Meet Our CEO

**About the Company**  
About the Company  
About the Company  
About the Company  
About the Company

**Our Great Dispsum Services**  
Our Great Dispsum Services  
Our Great Dispsum Services  
Our Great Dispsum Services

**Our Great Infographic**  
Our Great Infographic  
Our Great Infographic  
Our Great Infographic

**Another Great Infographic**  
Another Great Infographic  
Another Great Infographic  
Another Great Infographic

**Another Great Infographic**  
Another Great Infographic  
Another Great Infographic  
Another Great Infographic



# WEDDINGS, PARTIES, ANYTHING



TALK *thirty* TO ME

LET'S DRINK TO SARAH'S 30TH

MONTH DD, 2025 AT 6.00 PM  
123 ANYWHERE ST, ANY CITY

**Mother's Day Sunday 8th May**

**LUNCH SPECIAL**

1/2 doz oysters kilpatrick  
1 glass of wine or sangria  
1 eye fillet steak, chips & salad  
1 slice black forest cake  
1 glass of baileys & milk

**BOOK NOW** **Only \$50**

Spoil an amazing Mum with this fabulous lunch deal, available on 8th May, between 11am and 2pm. To book phone: 89 123 456

♥ SHE DESERVES IT ♥



**Chido RESTAURANTE MEXICANO**

**STARTERS**

**FRESH GUACAMOLE** 6.99  
Avocados, diced jalapeños, pico de gallo, topped with fresh lime juice and cotija cheese

**CHILE CON QUESO** 6.49  
Warm, creamy cheese dip with poblano peppers, onions, garlic, jalapeños and pico de gallo

**FRESH MEX SAMPLER** 10.99  
Chicken fajita nachos, chicken quesadilla, border wings and crispy chicken flautas

**FAJITA NACHOS** 9.49  
Individual tortilla chips topped with refried beans, grilled chicken and jack cheese

**CRISPY CHICKEN FLAUTAS** 8.49  
Lightly crisped flour tortillas stuffed with fire-roasted red peppers, cheese, and grilled corn

**BORDER WINGS** 9.99  
Gigante chicken wings tossed in your choice of Mexican BBQ or spicy wing sauce served with ranch dipping sauce

**FAVOURITES**

**GRILLED FAJITAS** 13.99  
Mesquite-grilled chicken breast marinated in fresh citrus & chiles, marinated and flame-grilled steak

**MESQUITE-GRILLED STEAK** 13.49  
Flour tortillas stuffed with mesquite-grilled steak and melted cheddar cheese, grilled golden brown


**SHRIMP & CRAB ENCHILADAS** 15.99  
Shrimp & blue crab sautéed in white wine & garlic, folded in tortillas w/ veggies, cheese & cream sauce

**FISH TACOS** 11.99  
Handmade soft flour tortillas filled with grilled fish, chipotle aioli, crisp lettuce, pico de gallo & cotija cheese.

**FAJITA BURRITO** 11.49  
Fresh grilled chicken, rice, beans a la charra, cheese and fire-roasted salsa stuffed into a warm flour tortilla

**MESQUITES-GRILLED TACOS** 11.99  
Soft flour tortillas filled with grilled chicken, crisp lettuce, pico de gallo, chipotle aioli and cotija cheese



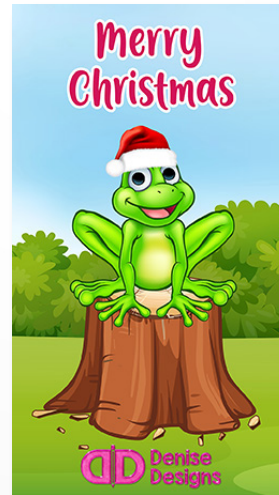
Mains		From the Ocean		Schnitzels	
BANIGERS & MASH	\$20.00	CLASSIC FISH & CHIPS	\$21.00	CLASSIC CHICKEN SCHNITZEL	\$15.50   \$21.00
Banig's signature served with creamy mash potatoes, garlic, tomato sauce & lemon		Battered/fried/saut served with chips, fresh garden salad, tomato sauce & lemon		Crumbed chicken breast schnitzel served with chips, garden salad and your choice of sauce	HALF   FULL
GRILLED AVOCADO CHICKEN BREAST	\$27.00	GRILLED BARRAMUNDI or Locally sourced from Humpy's Dog Barramundi Farm, Tropical Island Style, served with mash & veggie	\$28.50	CLASSIC BEEF SCHNITZEL	\$15.50   \$21.00
Topped with bacon & Australian sauce. Served with creamy mashed potatoes & steamed veggies		CREAMY GARLIC PRAWNS	\$29.50	Crumbed beef schnitzel served with chips, garden salad and your choice of sauce	HALF   FULL
THREE COOKED PORK BELLY	\$28.00	Locally sourced prawns cooked in a creamy garlic sauce. Served with steamed rice & garden salad		SEIGNIOY TOPPINGS	
Served with steamed rice, hot chili & chilli aioli sauce		SALT & PEPPER SQUID	\$22.00	• CLASSIC PARMAGIANA	\$3.50
		Local salt and pepper squid served with chips, garden salad, sauce & lemon		Napoliata sauce & mozzarella	
		CRUMBED CALAMARI	\$21.00	• HAWAIIAN	\$3.50
		Served with chips, garden salad, tomato sauce & lemon		Ham, pineapple, pineapple & mozzarella	
		FISHERMAN'S BASKET	\$24.50	• NAUJIAN	\$4.50
		Crumbed and battered Humpy dogs, scallops, prawns & calamari. Served with chips, fresh garden salad, tartare sauce & lemon		Shrimp, onion, egg, mozzarella & BBQ	
				• GREEK	\$4.50
				Napoliata sauce, olives, feta & mozzarella	
				• MEXICAN	\$4.50
				Napoliata, pineapple, tomato salsa, mozzarella & sour cream	
				Weekly Specials	
Kids Menu		Something Sweet		SPECIALS BOARD	
FISH & CHIPS	\$9.00	SELECTION OF CAKES	From \$5.00	MONDAY - TUESDAY	
HAWAIIAN PIZZA & CHIPS	\$9.00	Beef & Ham, with optional of Chef's Specialty Cakes. See our website or ask one of our friendly staff for today's selection & add to cart from 22.00		\$20.00 MEAL DEAL	\$20.00
CHICKEN NUGGETS & CHIPS	\$9.00	ICE CREAM & TOPPING	\$4.50	A purchased meal and receive a complimentary drink, wine or soft drink PLUS KIDS EAT FREE WITH EVERY MAIN MEAL PURCHASE	
MARINATED STEAK & CHIPS	\$9.00	Vanilla ice-cream with your choice of chocolate, strawberry or coconut sauce		WEDNESDAY'S SPECIALS BOARD	
SPAGHETTI BOLOGNAISE	\$9.00	COFFEE & CAKE DEAL	\$4.50	CHEF'S SELECTION NIGHT	
CROAKET FRANKFURTS & CHIPS	\$9.00	Choose from our delicious selection of Chef's Specialty Cakes plus a coffee or your choice.		Choose from a selection of specials prepared by our Chef's	
GRILLED AVOCADO CHICKEN BREAST	\$9.00			THURSDAY'S	
				\$18.50 SCHNITZ NIGHT	\$18.50
				Choose from a chicken or beef schnitzel served with chips, garden salad and your choice of sauce	
				FRIDAY'S	
				CHEF'S SELECTION NIGHT	
				Choose from a selection of specials prepared by our Chef's	
				SATURDAY'S	
				\$23 STEAK NIGHT	\$23.00
				Choose from a 250g Scotch Fillet or Rump Steak served with chips, garden salad and your choice of sauce	
				SUNDAY'S	
				\$17 SUNDAY ROAST	\$17.00
				Eggs & potatoes roast meal served with creamy mash, steamed veggies & traditional gravy. Available at lunch or dinner	

MEMBER PRICE DISPLAYED NON-MEMBERS ADDITIONAL 10%





# WEDDINGS, PARTIES, ANYTHING





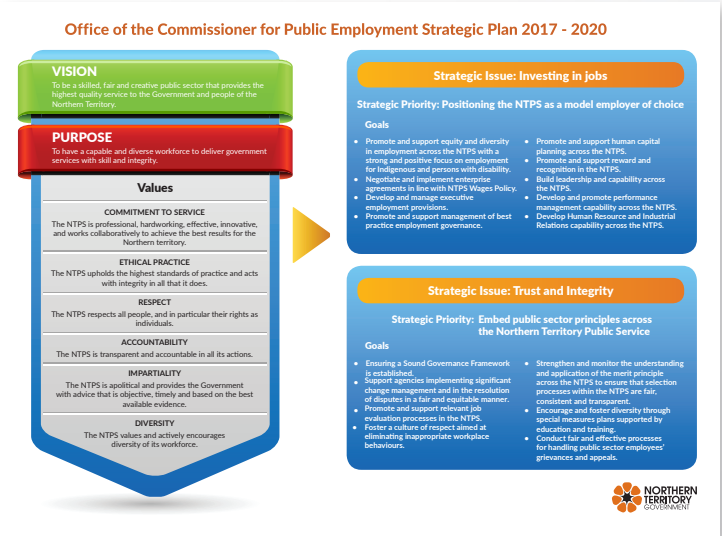
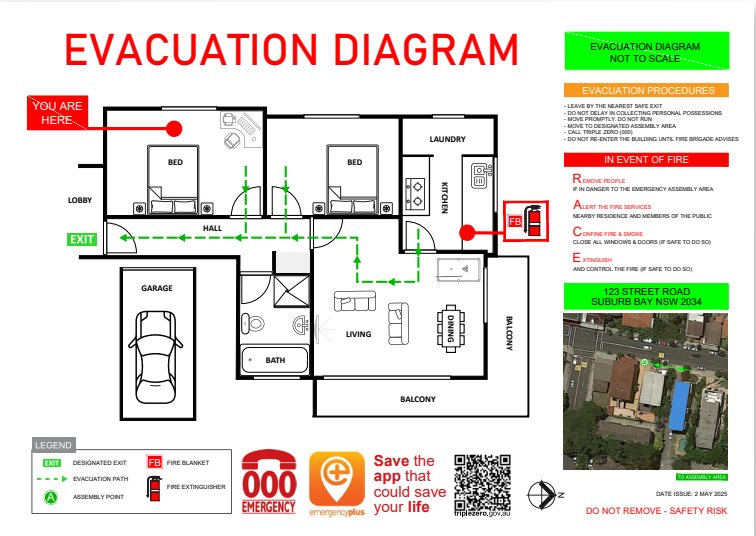
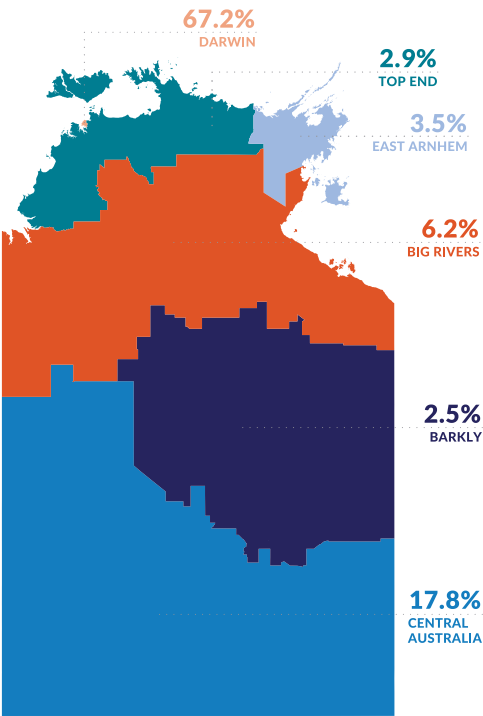


Figure 8 - Location of NTPS officers throughout the NT



NOTE: This table is based on Paid Headcount (staff with an FTE greater than 0).

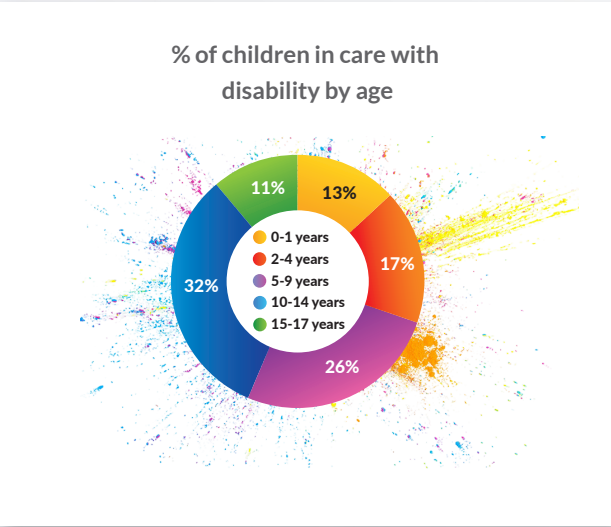
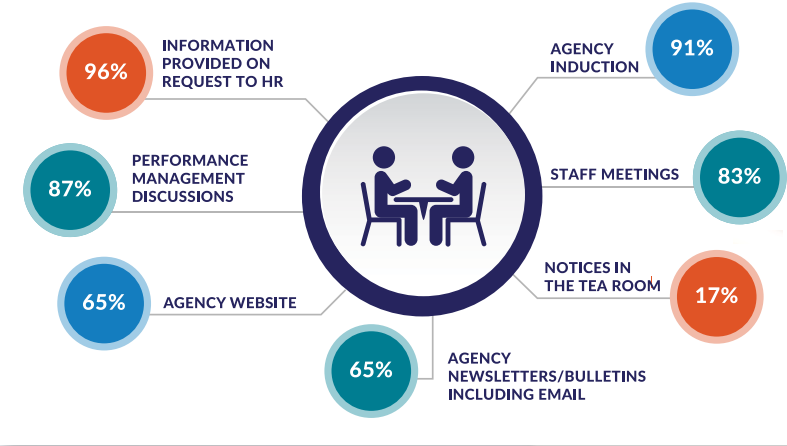


Figure 34 - Methods used to ensure employees are aware of the requirements to efficiently and appropriately use public resources





# PROMOTIONAL MATERIAL





# PROMOTIONAL MATERIAL



Poster



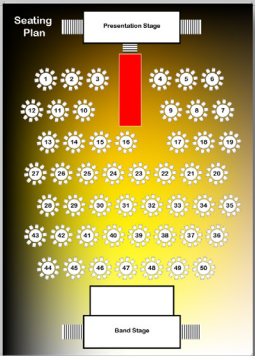
Certificate



Menu



Ticket and Table Numbering



Seating Plan



Lecturn Poster



Selfie Frame

# PROMOTIONAL MATERIAL



Giant Cheque



Web and Facebook Images



Certificate



Prospectus Cover





 [denisedesigns@bigpond.com](mailto:denisedesigns@bigpond.com)

 [denise-designs.au](http://denise-designs.au)

